



**HD 1040 B**

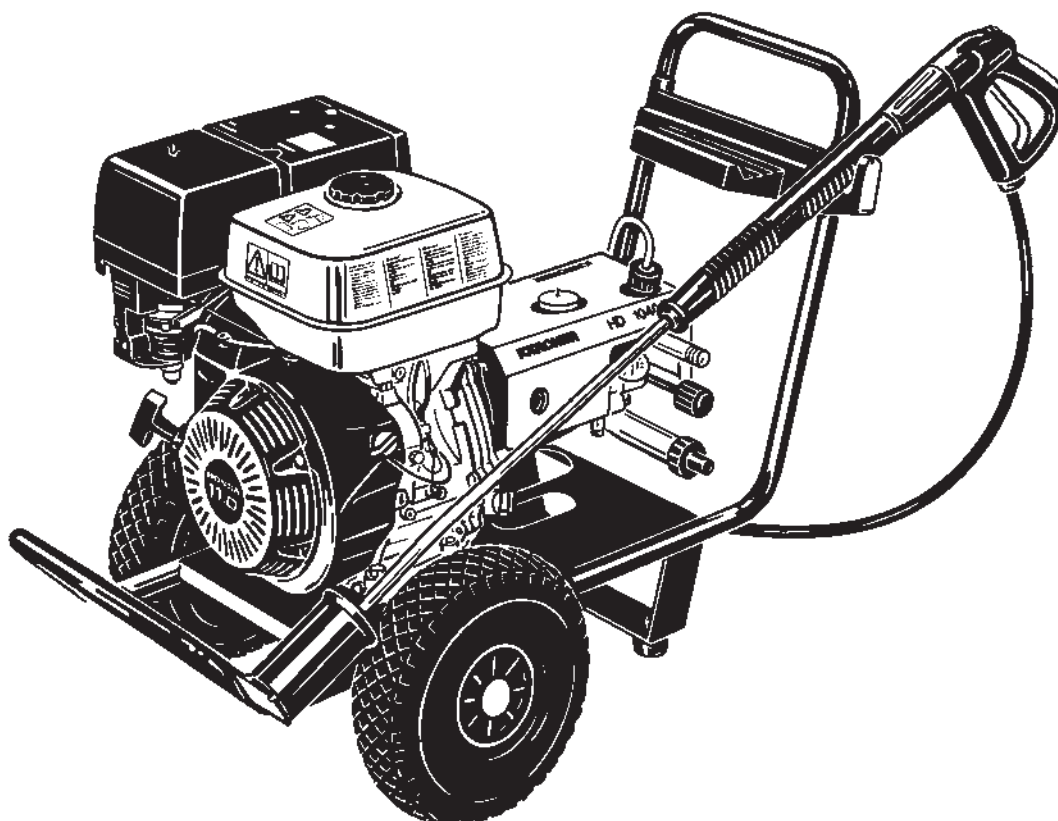
**New Unit Information**

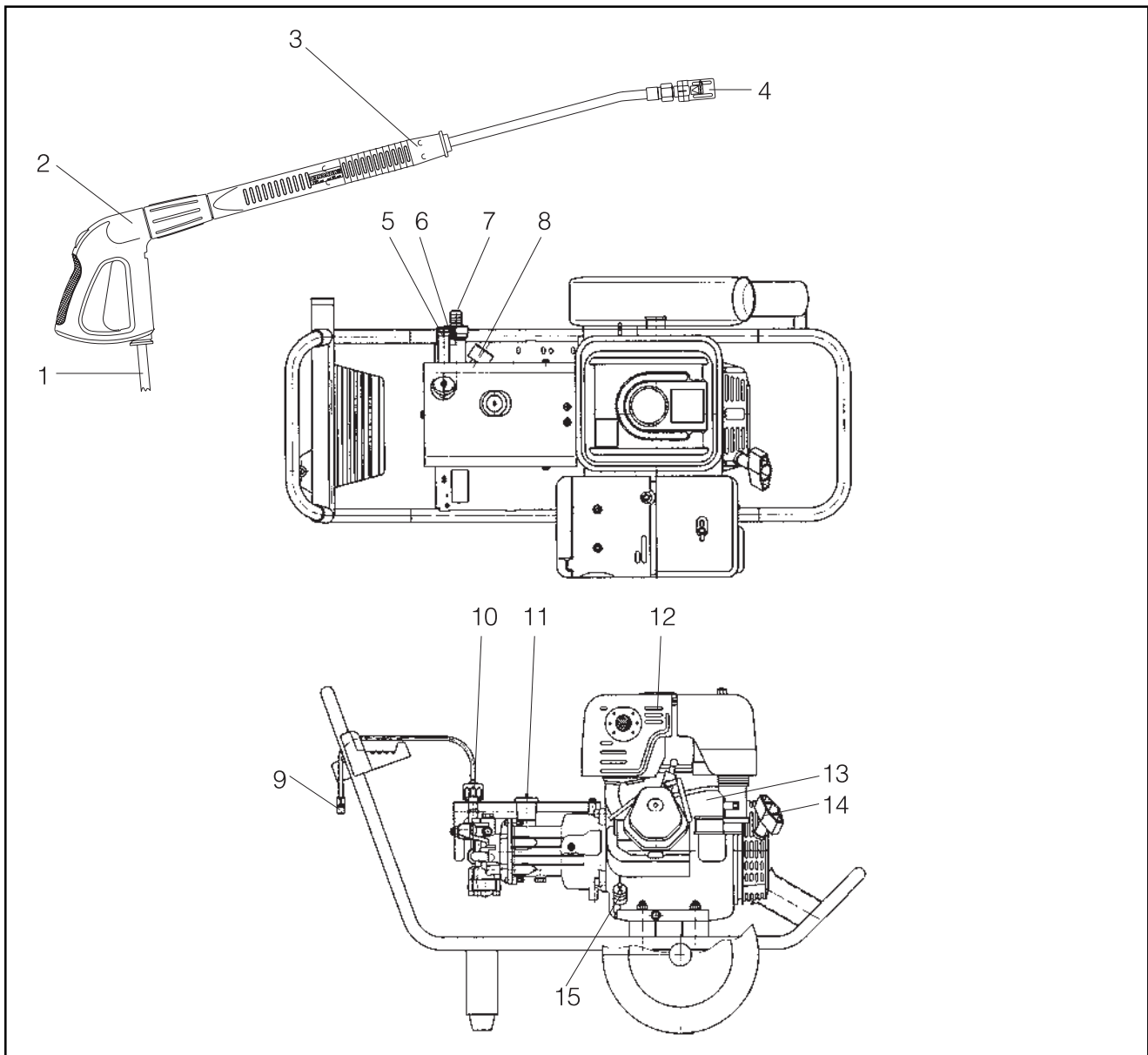
**International Service Information**

**No. 1997-080 of 17.12.1997**

# HD 1040 B

1.810-970



**HD 1040 B****New Unit Information****International Service Information****No. 1997-080 of 17.12.1997****Equipment Features**

1 High-pressure hose

2 Spraying handgun

3 Spray lance

4 Three-way nozzle

5 High-pressure outlet

6 Pressure and flow control

7 Water connection with strainer

8 Pressure gauge

9 Detergent intake hose with filter

10 Detergent metering valve

11 Oil reservoir

12 Fuel tank

13 Engine

14 Recoil hand start

15 Oil dipstick

**HD 1040 B****New Unit Information****International Service Information****No. 1997-080 of 17.12.1997****Technical Features****General**

Successor to HD 1020 B

- pump from HD 855 S / 895 S
- 11 PS Honda GX 340 with oil deficiency protection

**Pump**

- Cylinder head made of brass
- 3-piston axial pump
- Stainless steel piston
- Suction and pressure valve made of stainless steel
- Overflow valve with pressure and flow control
- Safety valve
- Temperature sensor at cylinder head for protecting the pump against overheating during circulation operation. At 80° engine ignition is short circuited
- Pressure gauge

**Cleaning-agent system**

- Detergent intake in the low-pressure mode (injector)
- Detergent connection with metering valve and non-return valve

**Other Features**

- Spray handgun with soft grip
- Rotatable spray lance 1050 mm
- 15 m high pressure hose 3/4"
- Wheels with air-filled tyres
- Three-way nozzle
- Fine filter at water inlet
- System 2000 high-pressure outlet

**HD 1040 B****New Unit Information****International Service Information****No. 1997-080 of 17.12.1997****Technical Data HD 1040 B 1.810-970**

Circuit diagram	Nr.	–	No.	–
Supply voltage/Phase	V	–	V	–
Allowable voltage tolerance	%	–	%	–
Type of current	Hz	–	Hz	–
Current consumption (full load)	A	–	A	–
Motor protective switch	A	–	A	–
High-pressure nozzle	Größe	050	size	050
Operating pressure (full load)	bar	230	psi	3335
Flow rate (full load)	l/min.	13.8	gpm	3.6
Detergent (full load)	l/min.	0.75	gpm	0.19
Water supply temperature (max.)	°C	60	°F	140
Water supply rate	l/min.	16.0	gpm	4.2
Water supply hose diameter	NW	3/4"	id	3/4"
Water supply pressure	bar	1–6	psi	14.5–87
Water supply hose length (min.)	m	7.5	ft	24
Sound level (LpA)	dB(A)	93.5	dB(A)	93.5
Pump – oil quantity	Liter	0.35	fl.oz.	11.8
Pump – oil type	Typ	15W40	type	15W40
Engine – oil quantity	Liter	1.1	fl.oz.	37.2
Engine – oil type	Typ	15W40	type	15W40
Engine – r.p.m. (full load)	U/min.	3000–3200	r.p.m.	3000–3200

- If the operating pressure is adjusted via the overflow valve, a new high-pressure nozzle must always be used.
- Read operating pressure on the unit pressure gauge.
- Measure flow rate at operating pressure (use shut-off valve).
- Set pressure switch to 10 bar / 145 psi above operating pressure (if adjustable).
- Set safety valve to 20 bar / 290 psi above operating pressure (if adjustable).